



# Hautū Waka

MARCH 2023



## Ngā mihi nui, welcome.

Hautū Waka is a methodology presented to us by renowned Tohunga and kaumātua Rereata Makiha.

The phases inside of Hautū Waka as explained to us by Papa Rereata are found in the karakia ‘Te kune te pupuke’ recited by Te Kohuora of Rongoroa and recorded by missionary Richard Taylor (Nicholson, 2020). With the guidance of Papa Rereata, we have been fortunate to utilise elements inside of this ancient karakia to create the framework before you.

We have been applying Hautū Waka as a methodology to help us become more intentional in our approach to systems thinking, process design, reflection and evaluation. The phases nestled inside of Hautū Waka offer guidance in how one can apply ancient ways of knowing, seeing and doing in a modern context.

We invite you to utilise this first stage of Hautū Waka as a resource for your kete of knowledge. This part of Hautū Waka is a koha, a gift that is not owned by one person and for this reason we have made it accessible to all.

This toolset is part of the first stage we have called the ‘pipi dive’. A light touch, shallow dive into the vastness that is Hautū Waka. To keep this Matauranga safe, stewardship and application of the next stages in this work have been given over to the practitioners of Te Ao Māori who will determine when and if these stages can be accessed to the general public.

---

*This document is based on work done by Roimata Taniwha-Paoo and Ayla Hoeta, guided by Matua Rereata Makiha.*

**For more information visit:** [Auckland Co-Design Lab](#)

# Whakariterite

Preparing the Waka.  
Preparation of crew.

Making sure we have everything  
needed for the journey ahead.

Purpose alignment and identify  
skill-set what resources are needed  
and what resources we leave behind.



# Whakariterite

## Questions

- What are the conditions and relationships like?
- What prepared us for this mahi?
- What did we recognise as current system conditions and capabilities?
- What skillsets did we identify as needed on this journey?
- What did we decide to leave on shore and not take with us?

# Te Rapunga

No hea tātou?

Drawing on past experiences.  
Venturing into the unknown.  
Infinite potential.

Our collective knowledge and  
experience attunes us to noticing  
tohu that will guide us to our  
common aspirations.



# Te Rapunga

## Questions

- What supports us to spot tohu?
- What are the capabilities, mindsets, processes, that support us to spot emerging tohu?

# Te Kitenga

Sighting tohu to project your forward.  
Kei hea tātou? Attuning to where we  
are and what is going on around us.

A space for noticing and  
acknowledging tohu from a different  
perspective within the collective  
knowledge and experience



# Te Kitenga

## Questions

- What tohu are you seeing in the system?
- What is the landscape?
- What is the context?
- What are the opportunities?
- What tohu are you seeing that can lead toward compelling alternatives to the status quo.

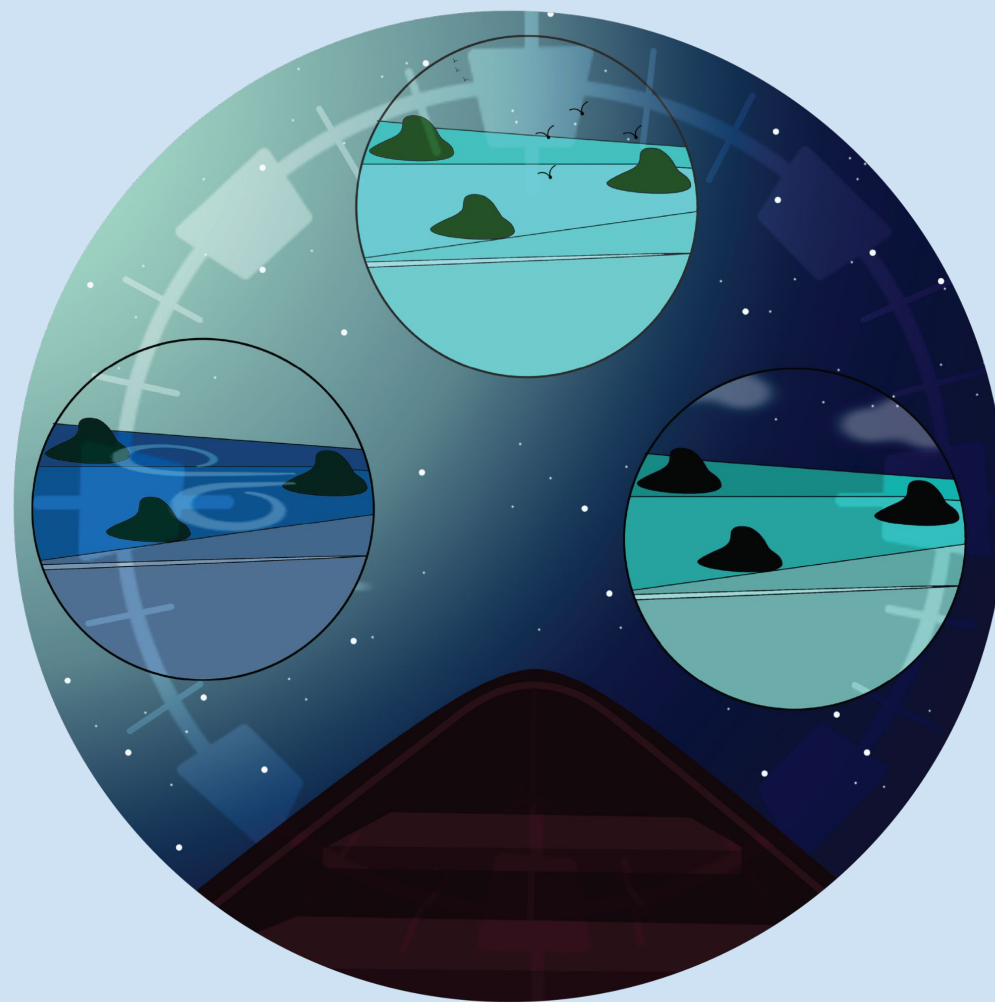


# Te Whāinga

Me ahu pēhea tātou.  
Which way should we go?

This is a phase of digging deeper,  
researching and exploring tohu that  
will set the journey path.

Testing the waters and taking a  
closer look.



# Te Whāinga

## Questions

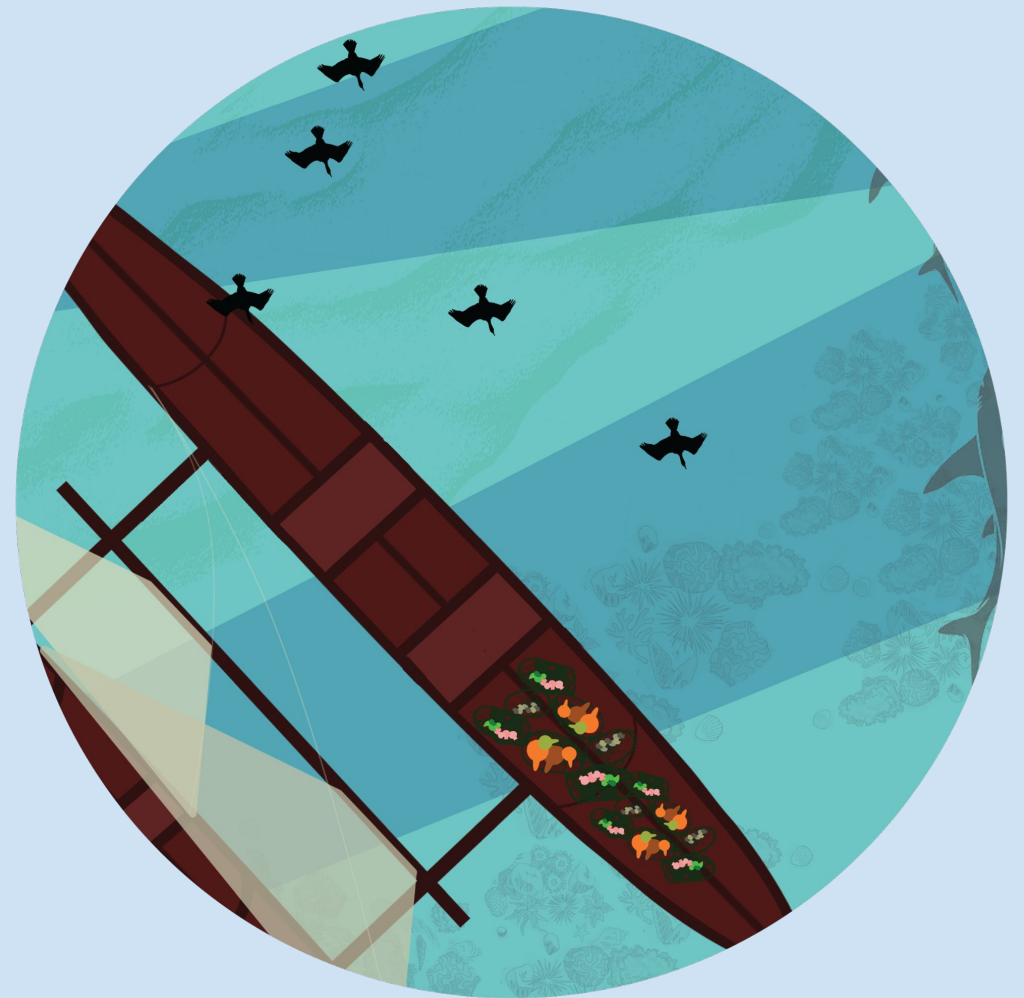
- What is the nature of these compelling alternatives?
- What do these tohu enable?
- What systems shifts do they support?
- What are the tangible mechanisms and actions that might help us?

# Te Whiwhinga

Mahia te mahi.  
A closer look at the tohu.

This is a space where tohu are clear and the course has been set to move towards the collective vision.

We can see a way forward and are confident in our knowledge and direction but where is mahi to be done.



# Te Whiwhinga

## Questions

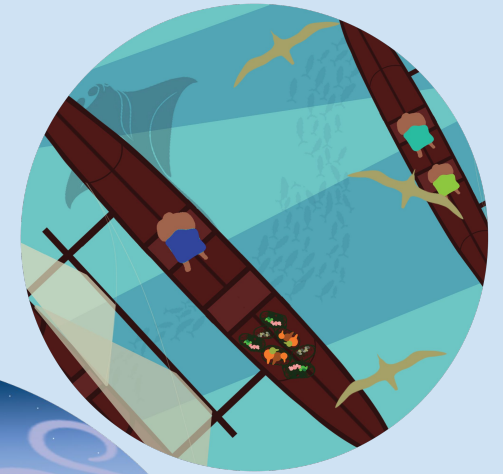
- What are the measurable outcomes we are seeing?
- What systems shifts do they support?
- What are we seeing is needed in capacities for systems change?
- What are we noticing about what is needed in systems conditions?
- What are we noticing is needed in capabilities for system change?

# Te Rawenga

Pūmahara

Collect, reflect, acknowledge tohu.

A space to celebrate, reflect, acknowledge and share learnings of tohu from the journey as a guide for others to follow.



# Te Rawenga

## Questions

- What would you like to celebrate and acknowledge?
- What will we share with others as reliable tohu and supporting evidence?

# Hautū Waka

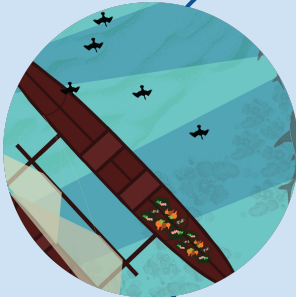


**Whakariterite**  
Preparation of Crew.

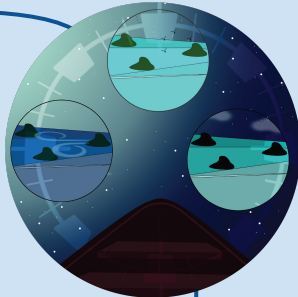


**Te Rapunga**  
Venturing into the unknown.

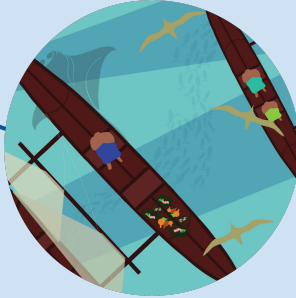
**Te Whiwhinga**  
A closer look at the tohu, Te Rawenga is in sight, a lot of work to be done.



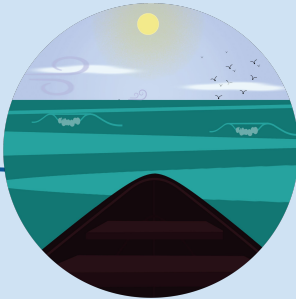
**Te Whāinga**  
Digging deeper, researching, exploring tohu.



**Te Rawenga**  
Celebrate, reflect, acknowledge tohu.



**Te Kitenga**  
Sighting tohu to project you forward.



# Ngā Mihi.

