



(Disruptive) Learning partnerships for wellbeing

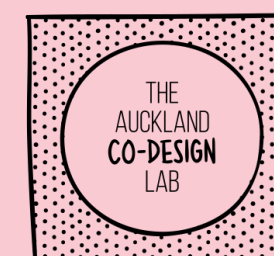
with

Angie Tangere (Ngāti Porou) - Kaitohu Tangata Whenua, Co-design Lab

Penny Hagen (Pākehā) - Director Tangata Tiriti, Co-Design Lab

The Southern Initiative & The Lab : Partners in Community Well-being May 2022

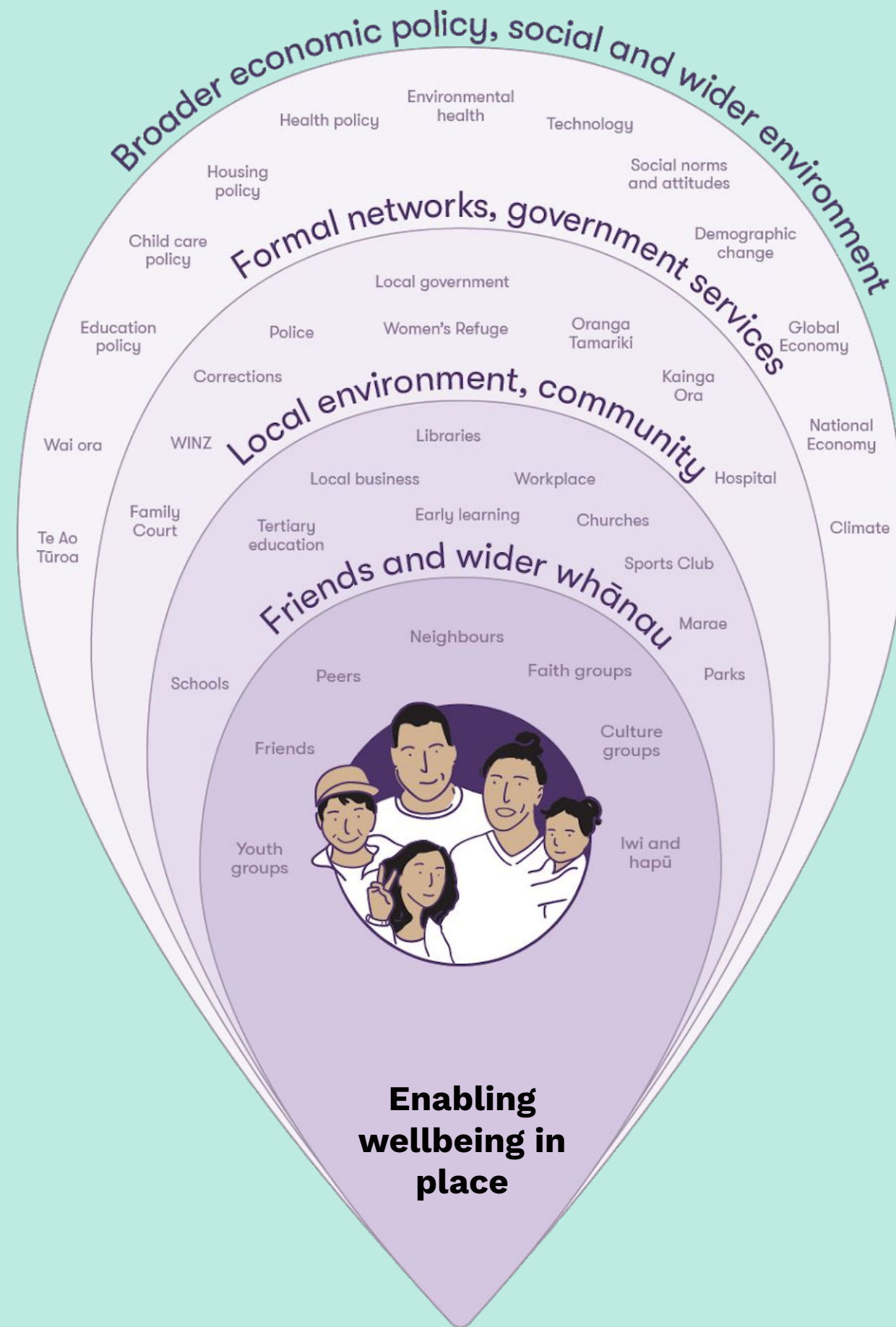
The
**Southern
Initiative**
■■■■■■■■■■



The premise:

Activating ecologies of wellbeing

Recognising, growing, strengthening the wellbeing ecologies that are already in place.



Grounded in place, te Taiao
Past, Present, Future

(disruptive) Learning partnerships for wellbeing

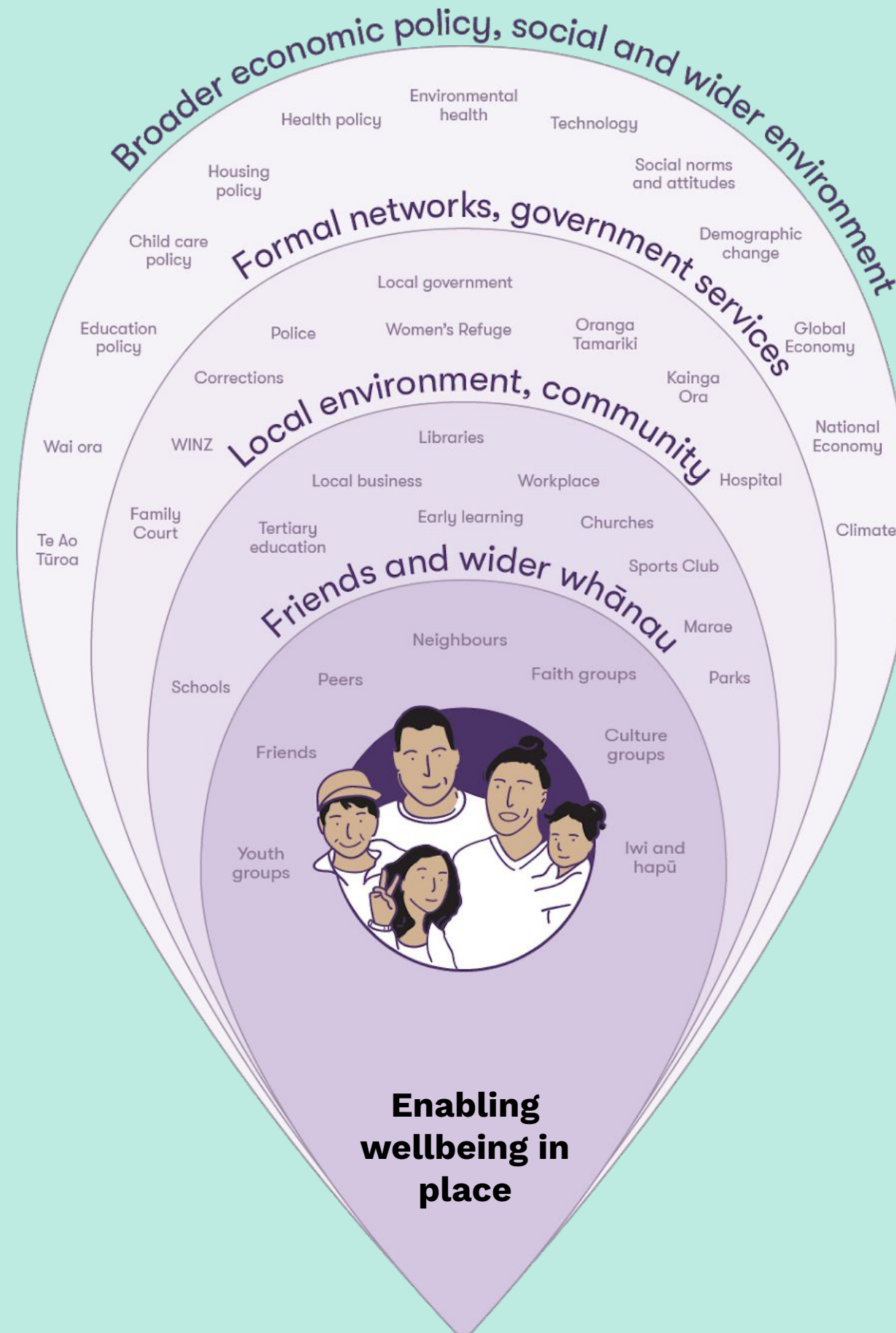
- power
- equity
- place
- Te Tiriti

Today:

Examples of (disruptive) learning partnerships

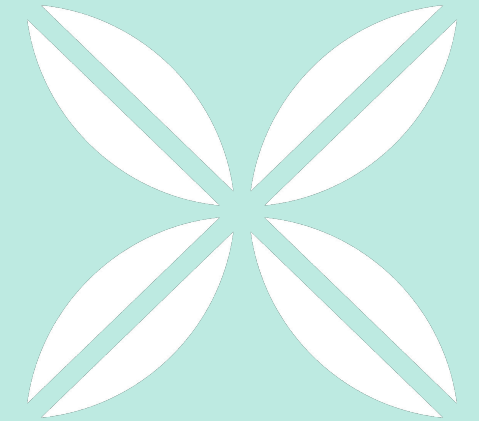
Enabling learning partnerships is an important 'function' for local government

*caveat kupu 'disruptive'



Grounded in place, te Taiao
Past, Present, Future

(disruptive) learning partnerships that collapse the distance



Sharing Power and Control

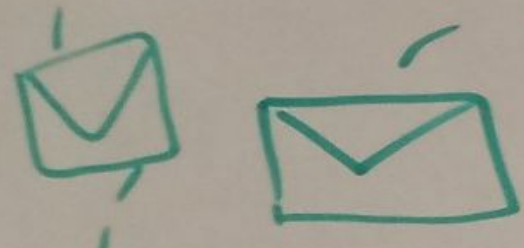
Te Arataki is about **positive, supportive relationships** between agencies and whānau, focused on sharing connections and social capital to progress **whānau aspirations.**



He Whānau Whānui o Papakura - Whānau-led Systems Innovation

INVITATION

- CONNECT



CONNECT

SUPPORT

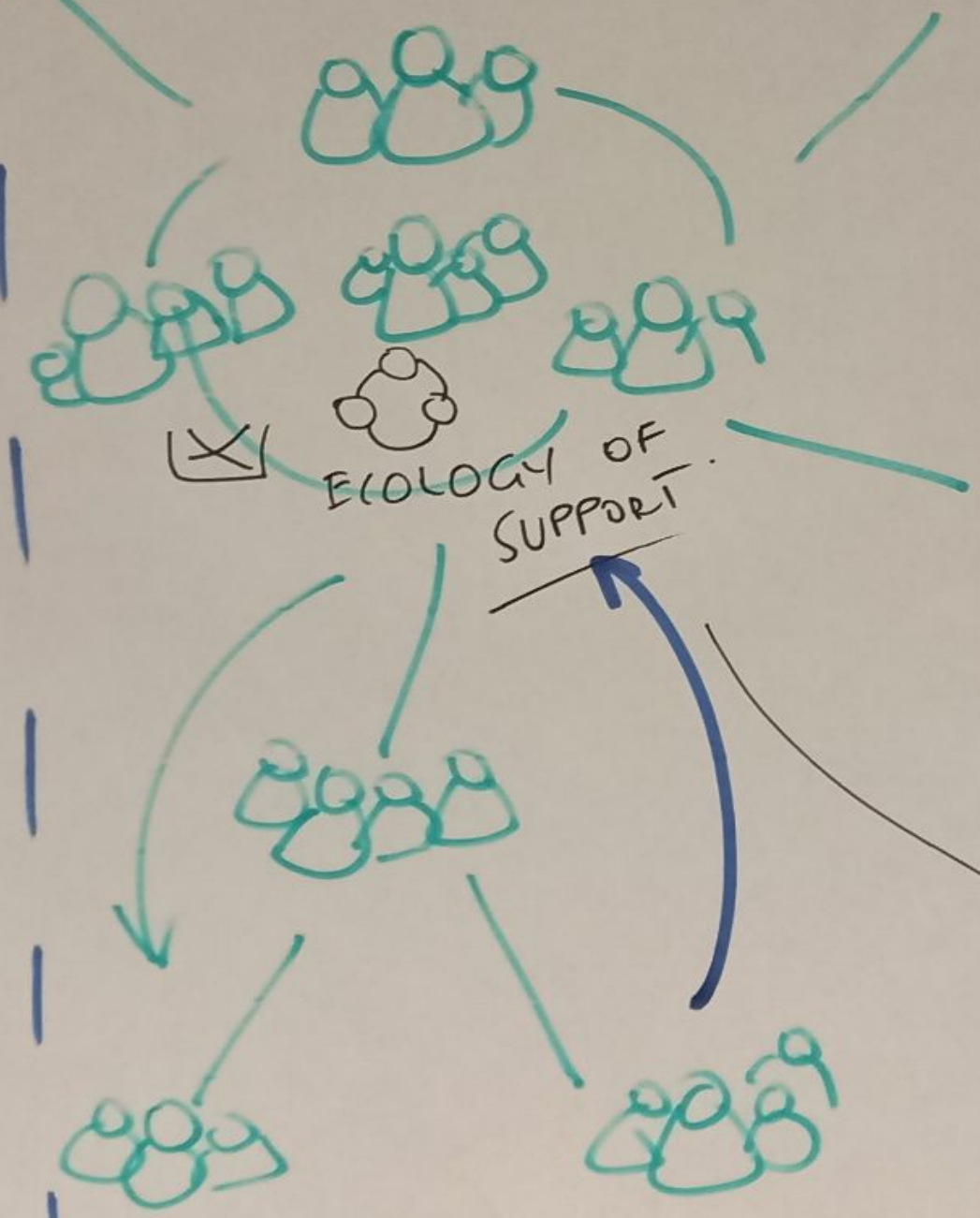
SUPPORT.



- CONNECTION
- RELATIONSHIP
- TRUST

MECHANISM

WHĀNAU - WHĀNAU



MODEL - SCALE

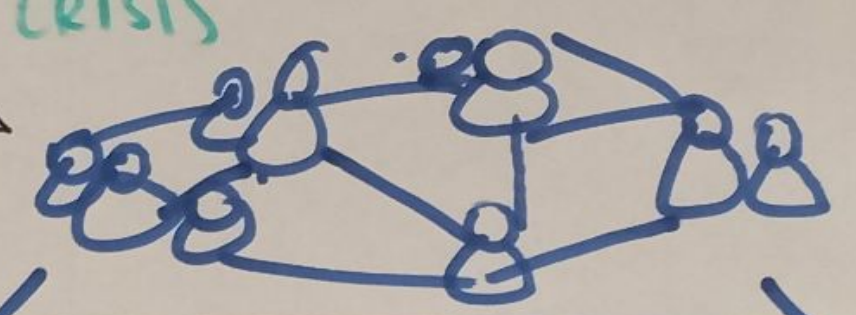
OUTCOME

RESILIENT WHĀNAU NETWORKS THAT

NURTURE CONNECTION + SUPPORT WHĀNAU LOCALLY. ACTIVATED IN WELLBEING +

IN TIMES OF NEED ISUPPORT FIRST PORT OF CALL FOR WHĀNAU // ALTERNATIVE

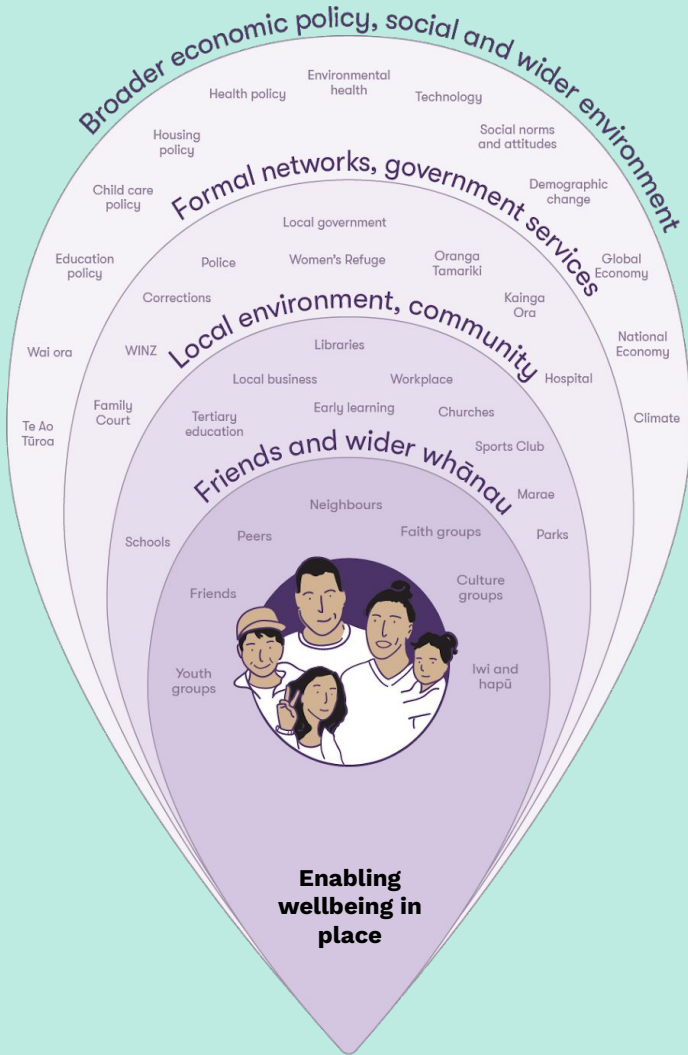
TO SERVICES RESILIENT WHETHER. LOCK DOWN OR PERSONAL CRISIS



CIRCULAR + REINFORCING

WE HAVE ENOUGH RESOURCES - WE DON'T NEED RELATIONSHIP

(disruptive) learning partnerships that connect local learning to wider policy 'enablers'



Teams developing the central policy and investment settings

Local efforts learning and testing things out with whānau in place

Grounded in place, te Taiao
Past, Present, Future

Niho Taniwha



(disruptive) learning partnerships that connect local learning to wider policy 'enablers'

Niho Taniwha Three Wāhi Ako

Wāhi Ako Tuatahi Learning and evidence from local efforts on the ground, trying and testing things out in place, in particular cultural contexts, tikanga, evidence-base

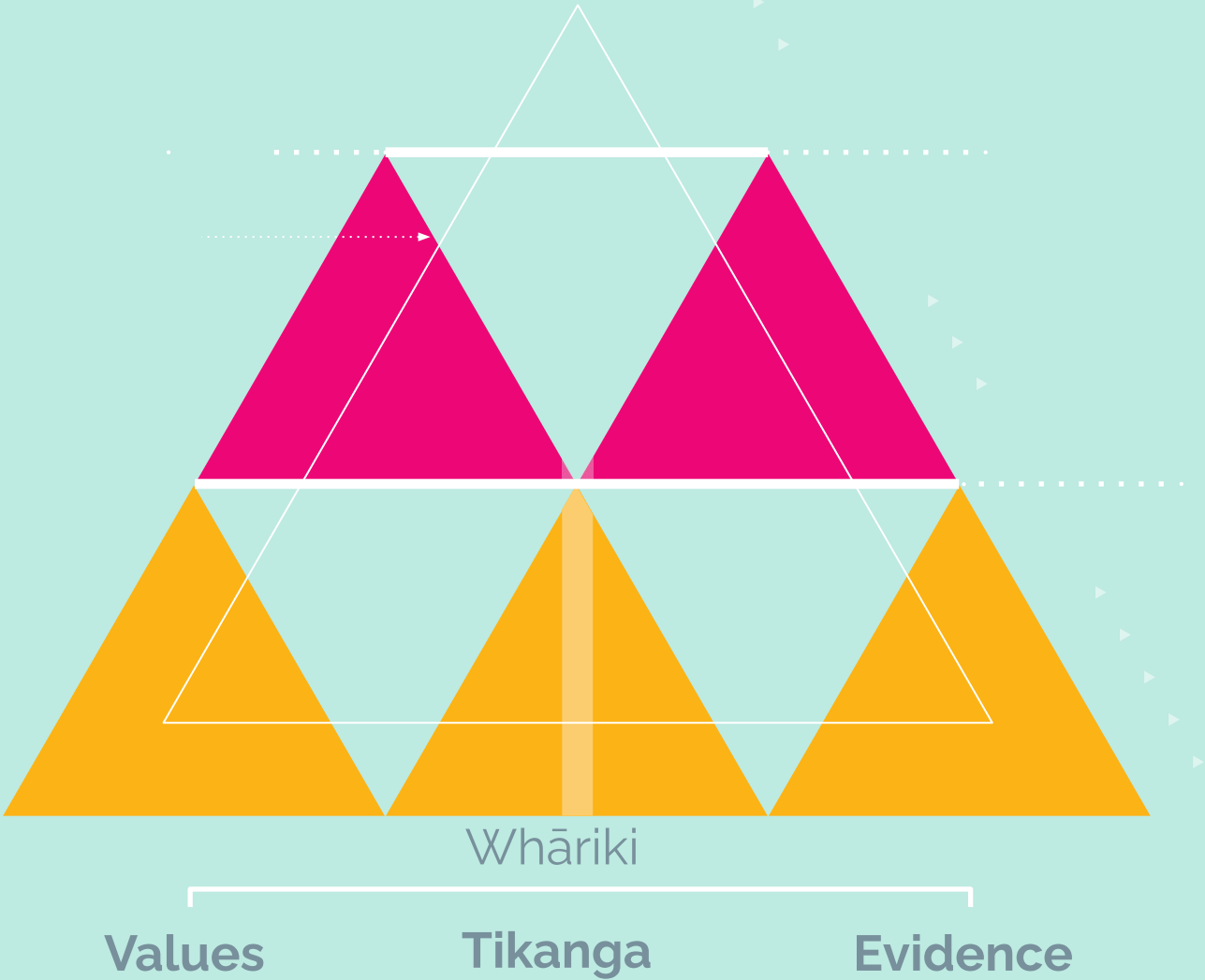


(disruptive) learning partnerships that connect local learning to wider policy 'enablers'

Niho Taniwha Three Wāhi Ako

Wāhi Ako tuarua Collective learning and evidence about what is important to enable locally-led, culturally grounded mahi, the systems conditions, barriers, readiness, meaningful indicators,

Wāhi Ako Tuatahi Learning and evidence from local efforts on the ground, trying and testing things out in place, in particular cultural contexts, tikanga, evidence-base



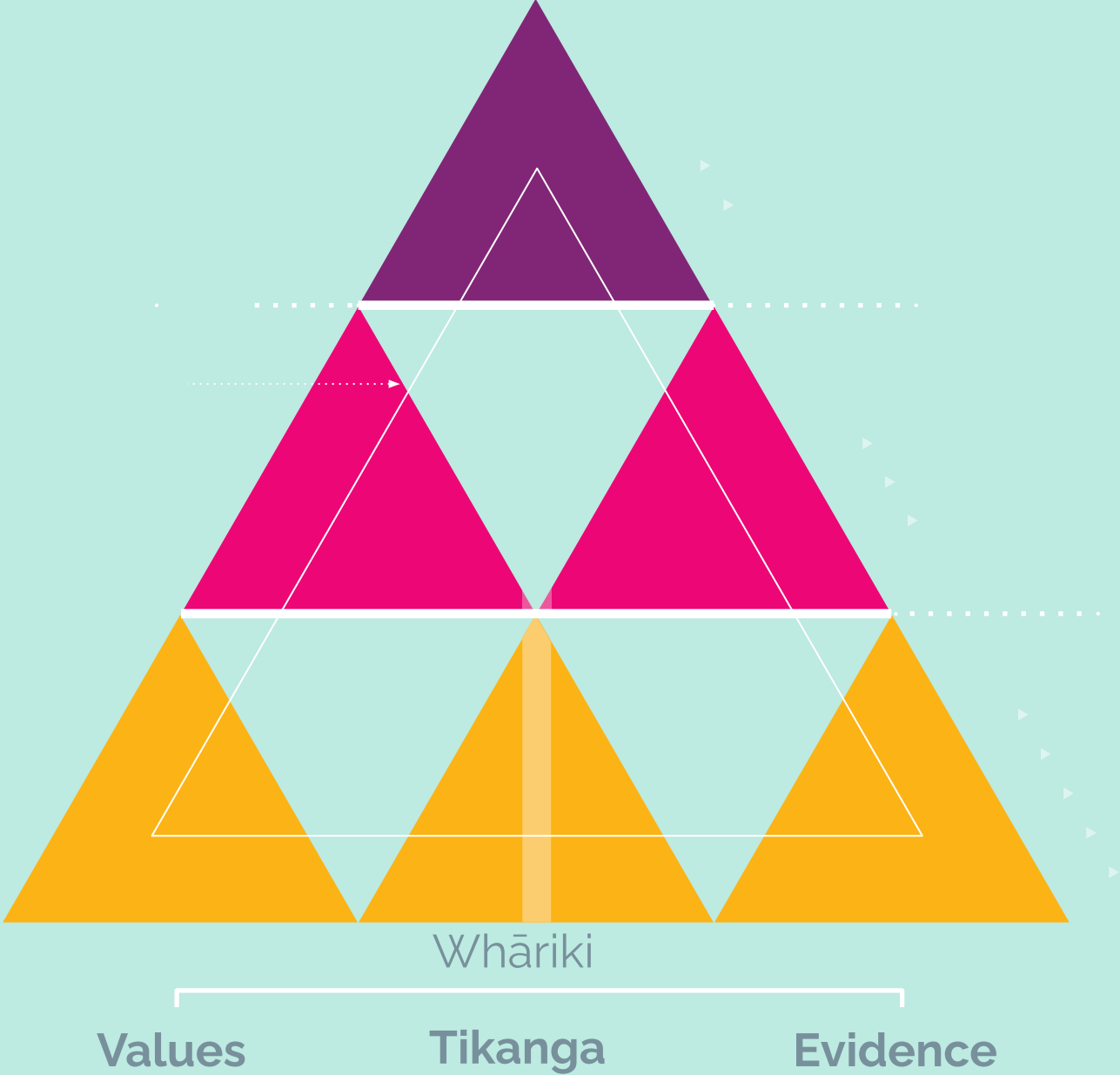
(disruptive) learning partnerships that connect local learning to wider policy 'enablers'

Wāhi Ako Tuatoru
 Opportunities to shift, respond, iterate policy and strategy settings to enable local wellbeing mahi, implications for government as enabler

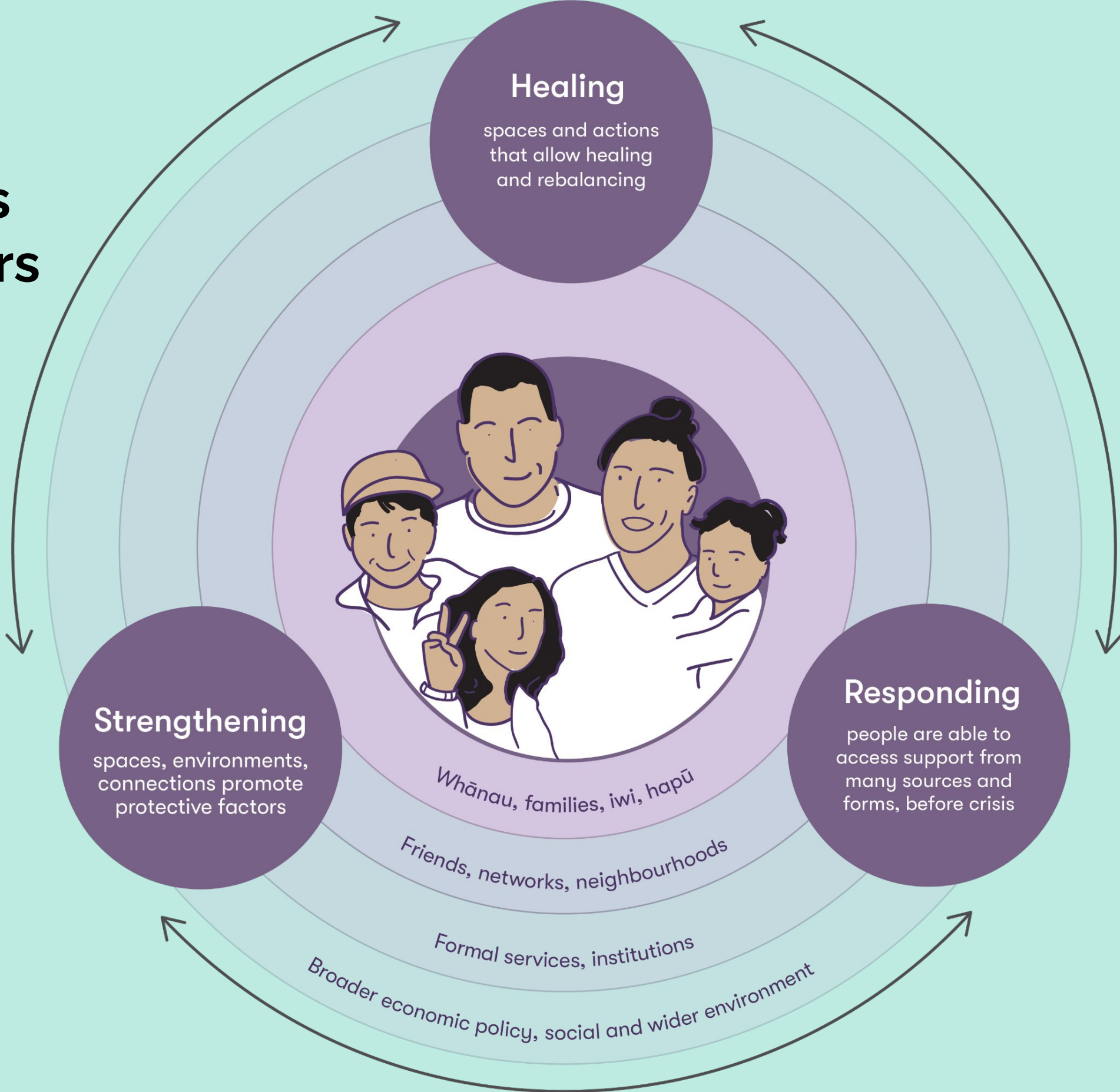
Wāhi Ako tuarua Collective learning and evidence about what is important to enable locally-led, culturally grounded mahi, the systems conditions, barriers, readiness, meaningful indicators,

Wāhi Ako Tuatahi Learning and evidence from local efforts on the ground, trying and testing things out in place, in particular cultural contexts, tikanga, evidence-base

Niho Taniwha Three Wāhi Ako



(disruptive) learning partnerships that re-orientate systems towards what matters to whānau

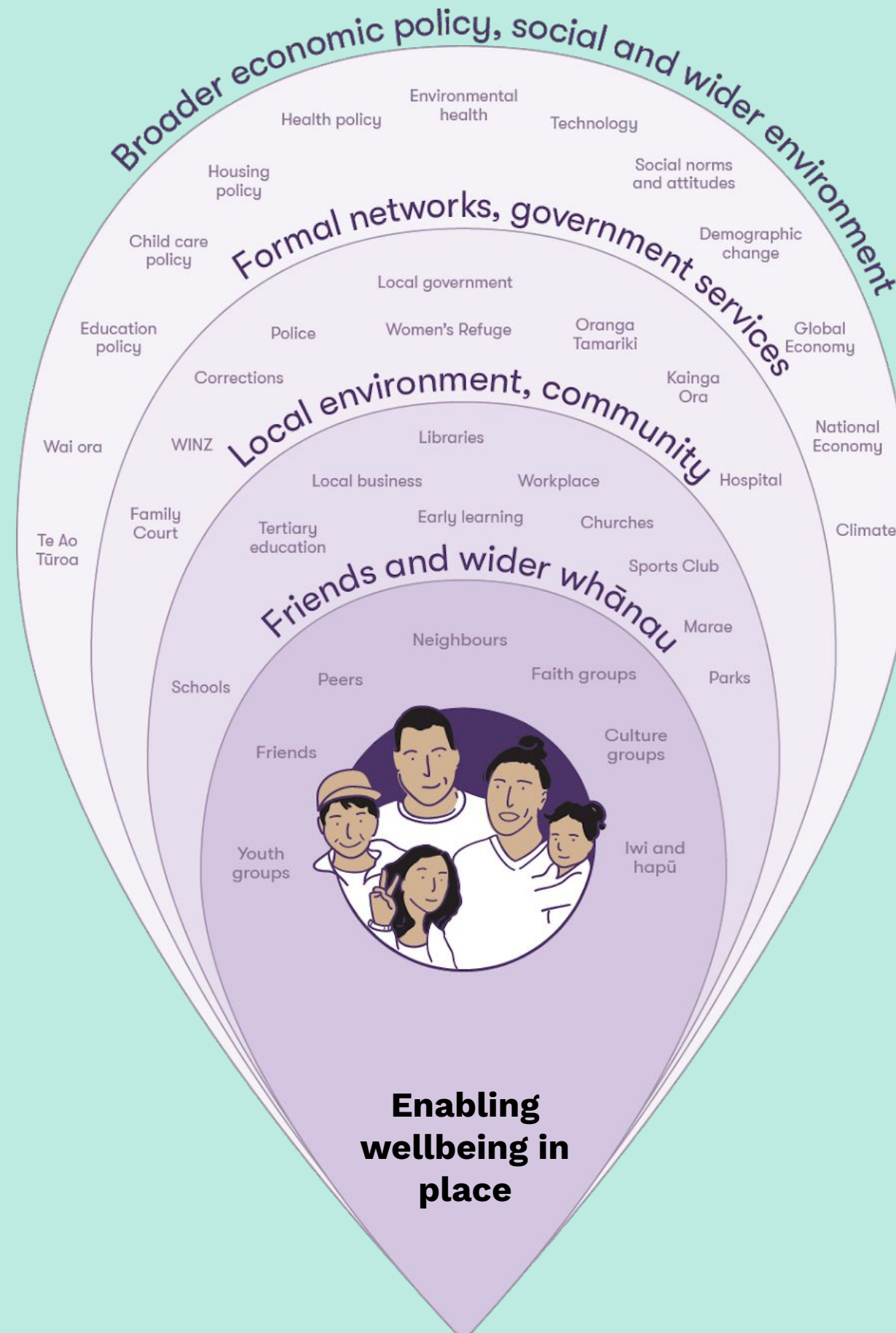


Te Tokotoru

(disruptive) learning partnerships for wellbeing as a critical 'function' of local government

The role of (disruptive) learning partner as a critical function for learning our way into Te Tiriti and equity based practices (wellbeing)

As an intermediary - local government is well positioned to do this/be this 'function' (if we value it)



Grounded in place, te Taiao
Past, Present, Future

(disruptive) Learning partnerships for wellbeing

Start differently

with values, tikanga, learning, healing, and seek to reconfigure systems capacities, relationships and capabilities



Scaling deep to scale out

Moving from shallow scaling out from central government, to enabling going deep in locality, culture, place.

Do *and* learn together

Not planning then doing, allow us to learn into new ways of working through doing it, building and tracking the development of different capacities and capabilities inside government

(until radical and disruptive partnerships aren't radical anymore)

Ngā mihi Thank you

Further links:

[Whānua-led systems innovation & He Whānau Whānau o Papakura](#)

[Niho Taniwha](#)

[Te Tokotoru](#)

Contact details:

Angie Tangaere: angie.tangaere@aucklandcouncil.govt.nz

Penny Hagen: penny.hagen@aucklandcouncil.govt.nz