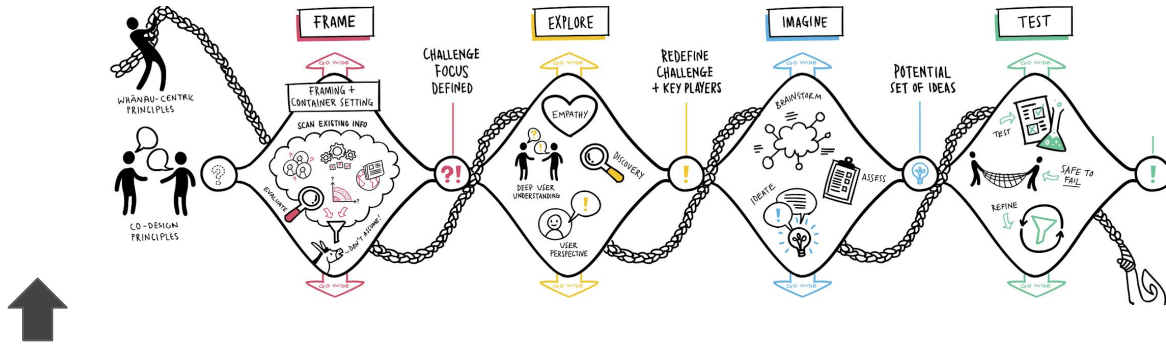


**Example of how ethical
questions impact
throughout the design
process**

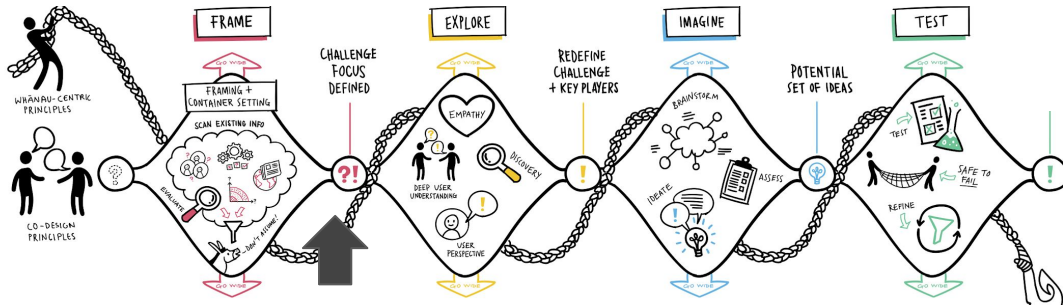


Pre-project/Commissioning

Who is commissioning the work (and what constraints, perceptions or bias might this introduce)?

Who does the design research?
Do we have the capability? Do we need help (and how would we know)?

Should we be doing this? Is it necessary? Is this information already available?



Early Project:

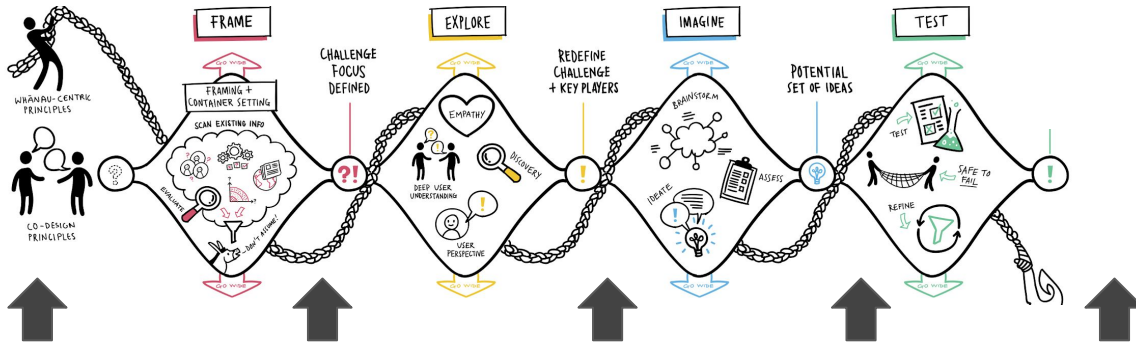
How are people invited to be involved, on whose terms?
How are people recruited?

Who decides who is involved?
Whose voice is heard and whose is not?

Who decides the methodology and process used?
Are we the right people to be doing this?

What is the benefit to people participating?
How are people compensated for their time?

What influence do people participating have over the outcome?



During Project: working with people

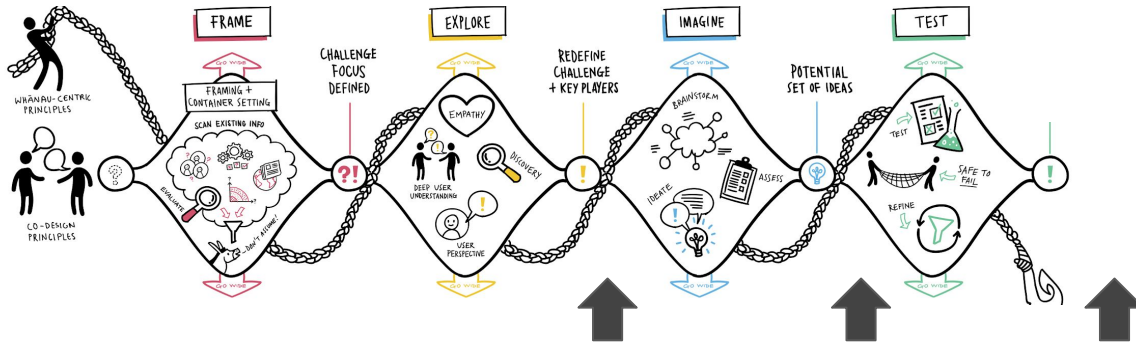
What is the potential of harm/risk to participants during and after participation (e.g., burden of participation, potential for negative impacts, disclosure of information, illegal or unsafe activity, triggering etc). How is this managed?

How is our duty of care exercised?

How will we manage impacts of potential conflicts or relationships of power and authority?

What are the requirements for confidentiality and data protection?

How is potential researcher bias mitigated?



During Project: actioning what we learn

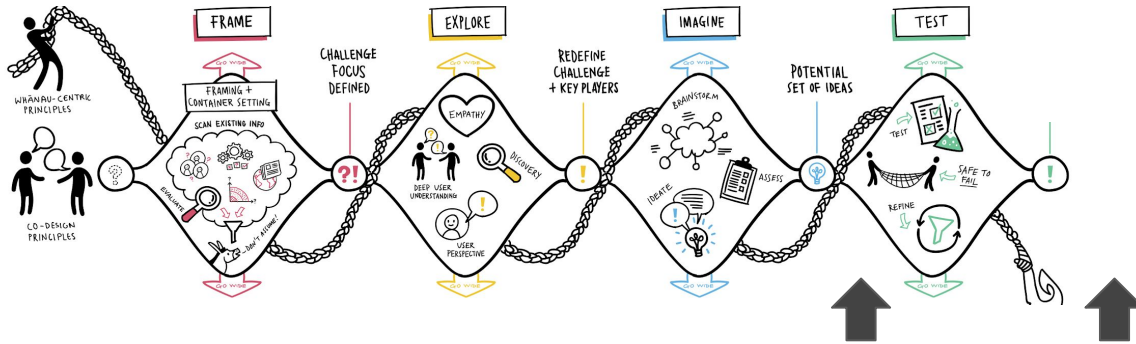
How is people's information represented and how much influence do they have over that?
Who owns the data/material/ideas?

How transparent is this process?
How rigorous is this process?

Who makes sense of the material and how?

What is left in and what is excluded?

Is their scope to respond to new issues as they emerge?



Ongoing: connecting to change and impact

What is the ongoing responsibility to people who participated?

What is the option to remain involved into implementation and ongoing design in use?

How much influence do we have over what is implemented?

How are expectations of change managed?