



Hautū Waka



Ngā mihi nui, welcome.

Hautū Waka is a methodology presented to us by renowned Tohunga and kaumātua Rereata Makiha.

The phases inside of Hautū Waka as explained to us by Papa Rereata are found in the karakia ‘Te kune te pupuke’ recited by Te Kohuora of Rongoroa and recorded by missionary Richard Taylor (Nicholson, 2020). With the guidance of Papa Rereata, we have been fortunate to utilise elements inside of this ancient karakia to create the framework before you.

We have been applying Hautū Waka as a methodology to help us become more intentional in our approach to systems thinking, process design, reflection and evaluation. The phases nestled inside of Hautū Waka offer guidance in how one can apply ancient ways of knowing, seeing and doing in a modern context.

We invite you to utilise this first stage of Hautū Waka as a resource for your kete of knowledge. This part of Hautū Waka is a koha, a gift that is not owned by one person and for this reason we have made it accessible to all.

This toolset is part of the first stage we have called the ‘pipi dive’. A light touch, shallow dive into the vastness that is Hautū Waka. To keep this Matauranga safe, stewardship and application of the next stages in this work have been given over to the practitioners of Te Ao Māori who will determine when and if these stages can be accessed to the general public.

This document is based on work done by Roimata Taniwha-Paoo and Ayla Hoeta, guided by Matua Rereata Makiha.

For more information visit: [Auckland Co-Design Lab](#)

Whakariterite

Preparing the Waka.
Preparation of crew.

Making sure we have everything
needed for the journey ahead.

Purpose alignment and identify skill-set
what resources are needed and what
resources we leave behind.



Whakariterite

Questions

- What are the conditions and relationships like?
- What prepared us for this mahi?
- What did we recognise as current system conditions and capabilities?
- What skillsets did we identify as needed on this journey?
- What did we decide to leave on shore and not take with us?

Te Rapunga

No hea tātou?

Drawing on past experiences.

Venturing into the unknown.

Infinite potential.

Our collective knowledge and experience attunes us to noticing tohu that will guide us to our common aspirations.



Te Rapunga

Questions

- What supports us to spot tohu?
- What are the capabilities, mindsets, processes, that support us to spot emerging tohu?

Te Kitenga

Sighting tohu to project you forward.
Kei hea tātou? Attuning to where we are
and what is going on around us.



A space for noticing and acknowledging
tohu from a different perspective within
the collective knowledge and experience



Te Kitenga

Questions

- What tohu are you seeing in the system?
- What is the landscape?
- What is the context?
- What are the opportunities?
- What tohu are you seeing that can lead toward compelling alternatives to the status quo.

Te Whāinga

Me ahu pēhea tātou.
Which way should we go?

This is a phase of digging deeper,
researching and exploring tohu that will
set the journey path.

Testing the waters and taking a closer
look.



Te Whāinga

Questions

- What is the nature of these compelling alternatives?
- What do these tohu enable?
- What systems shifts to they support?
- What are the tangible, mechanisms and actions that might help us?

Te Whiwhinga

Mahia te mahi.
A closer look at the tohu.

This is a space where tohu are clear and the course has been set to move towards the collective vision.

We can see a way forward and are confident in our knowledge and direction but there is mahi to be done.



Te Whiwhinga

Questions

- What are the measurable outcomes we are seeing?
- What systems shifts do they support?
- What are we seeing is needed in capacities for systems change?
- What are we noticing about what is needed in systems conditions?
- What are we noticing is needed in capabilities for system change?

Te Rawenga

Pūmahara

Collect, reflect, acknowledge tohu.

A space to celebrate, reflect, acknowledge and share learnings of tohu from the journey as a guide for others to follow.



Te Rawenga

Questions

- What would you like to celebrate and acknowledge?
- What will we share with others as reliable tohu and supporting evidence?

Hautū Waka



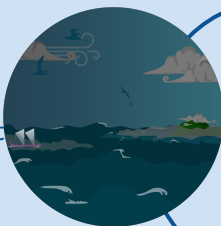
Whakariterite
Preparation of
Crew.



Te Rapunga
Venturing into the
unknown.



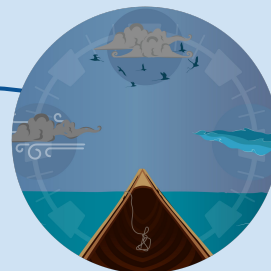
Te Whāinga
Digging deeper,
researching, exploring
tohu.



Te Whiwhinga
A closer look at the tohu,
Te Rawenga is in sight, a lot
of work to be done.



Te Kitenga
Sighting tohu to
project you
forward.



Te Rawenga
Celebrate, reflect,
acknowledge tohu.

Ngā Mihi.



HE HUI TAUMATA

USING HAUTŪ WAKA TO FEEL THE RHYTHM

WHAKARITERITE



PREPARING THE WAKA TO ENSURE WE HAVE
EVERYTHING READY FOR THE JOURNEY

TE RAPUNGA



VENTURING INTO
THE UNKNOWN

HAUTŪ WAKA

IT'S NOT SOMETHING
WE PLUCKED OUT
OF THIN AIR!

DEEP HISTORY

NOT 2D/
LINEAR



ROIMATA TAWIHIA

TE WHIWHINGA



TOHU ARE CLEAR
CAN SEE THE WAY
FORWARD

TE WHĀINGA

DIGGING DEEPER
RESEARCHING
EXPLORING TOHU



TE KITENGA



NOTICING &
ACKNOWLEDGING
TOHU FROM DIFFERENT
PERSPECTIVES

SEARCHING
FOR SIGNS
OPPORTUNITIES



TE RAWENGA

COLLECT, REFLECT, CELEBRATE
ACKNOWLEDGE TOHU

WHERE DO YOU
PLACE YOURSELF
ON THIS JOURNEY
& WHY?



THE
AUCKLAND
CO-DESIGN
LAB