

# Hautū Waka

Based on work done by Roimata Taniwha-Paoo and Ayla Hoeta, guided by Matua Rereata Makiha.



**Whakariterite**  
Preparation of Crew.

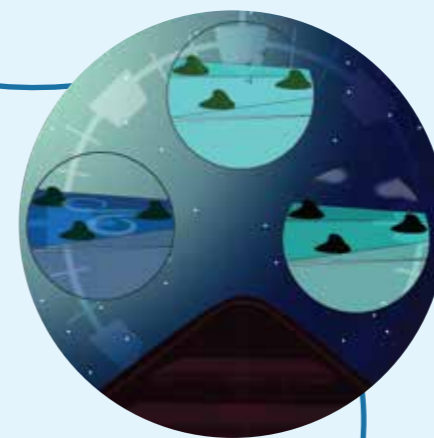


**Te Rapunga**  
Venturing into the unknown.

**Te Whiwhinga**  
A closer look at the tohu,  
Te Rawenga is in sight,  
a lot of work to be done.



**Te Whāinga**  
Digging deeper,  
researching,  
exploring tohu.



**Te Rawenga**  
Celebrate, reflect,  
acknowledge tohu.



**Te Kitenga**  
Sighting tohu to project  
you forward.



**For more information:**

<https://www.aucklandco-lab.nz/resources-summary/hautu-waka>

